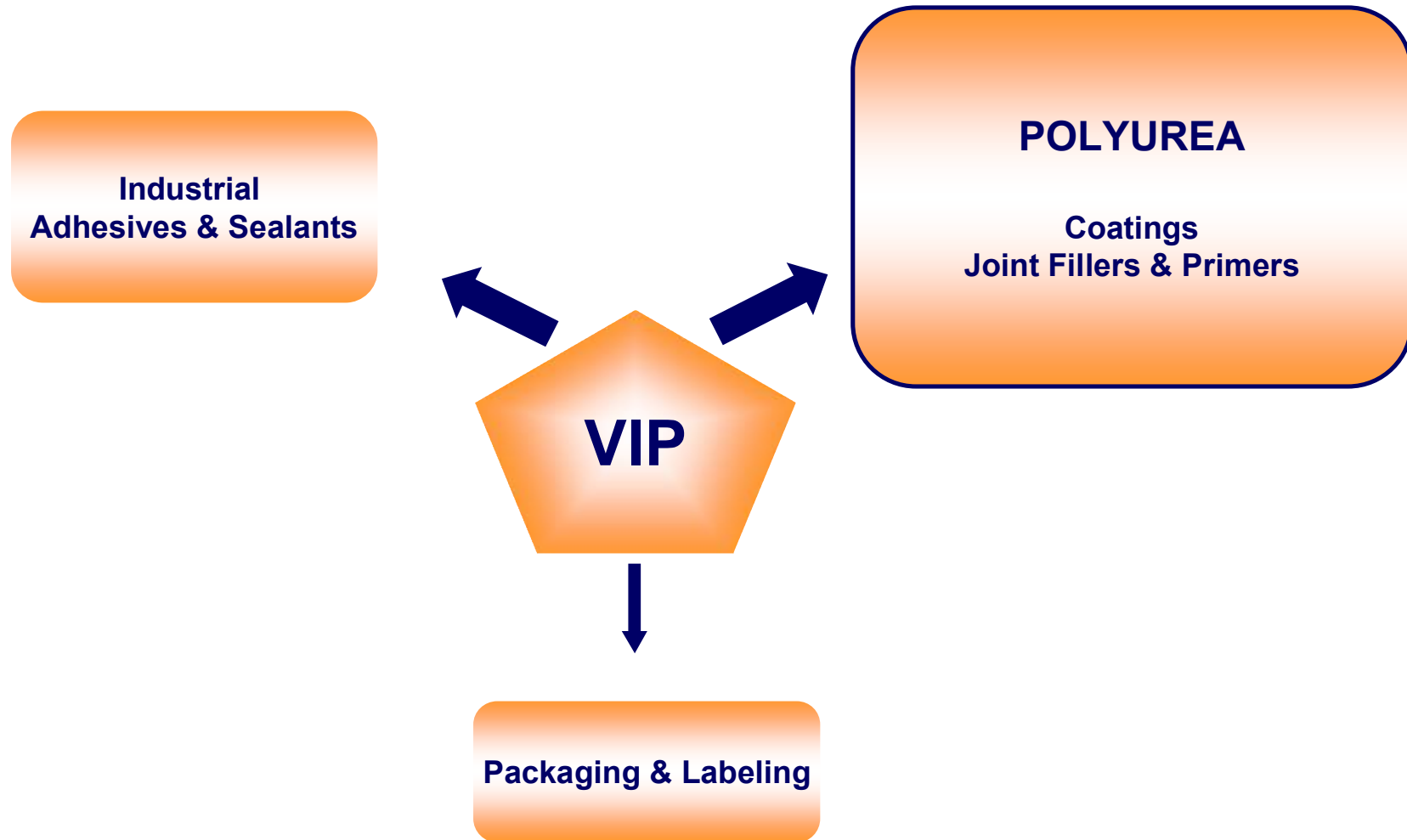


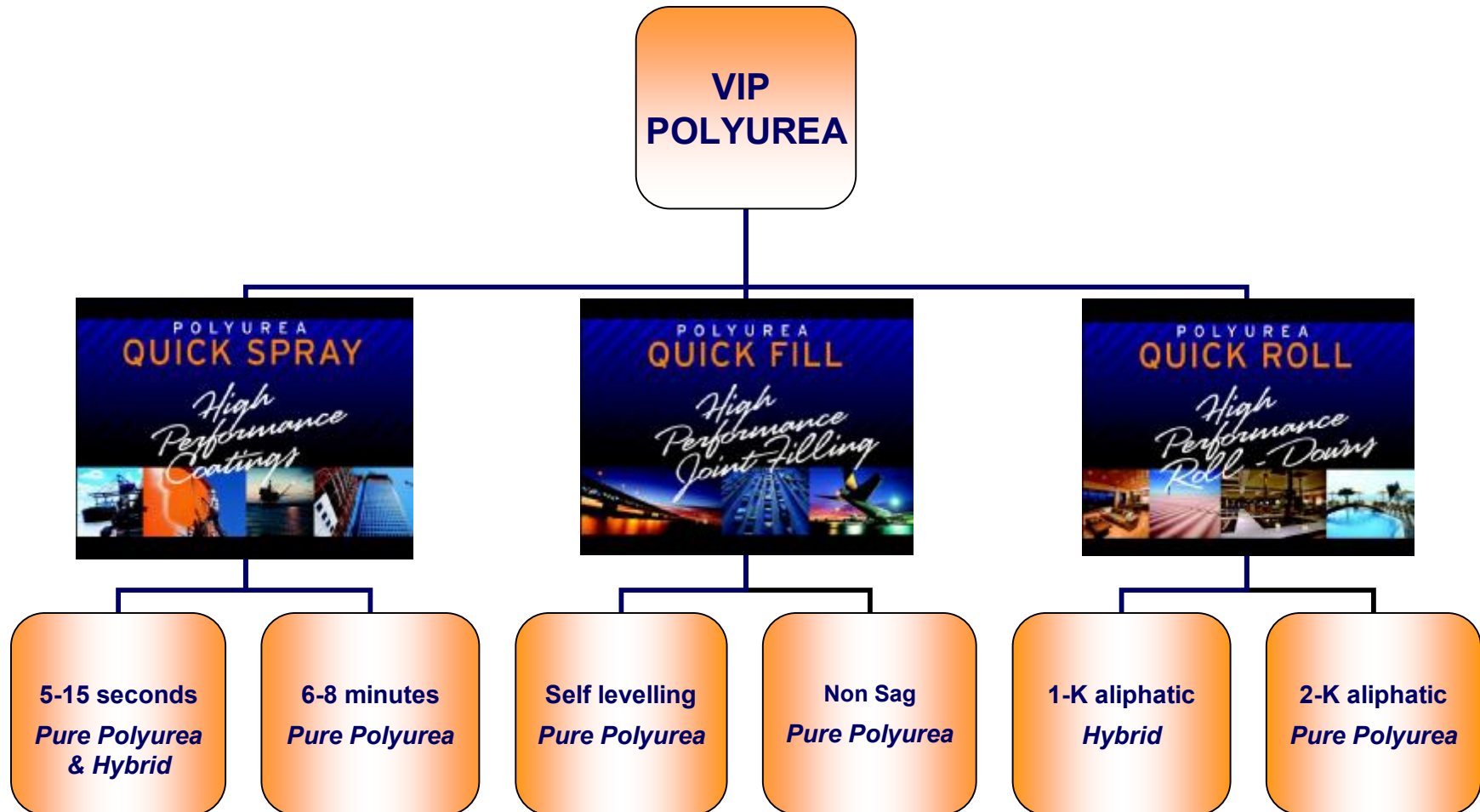


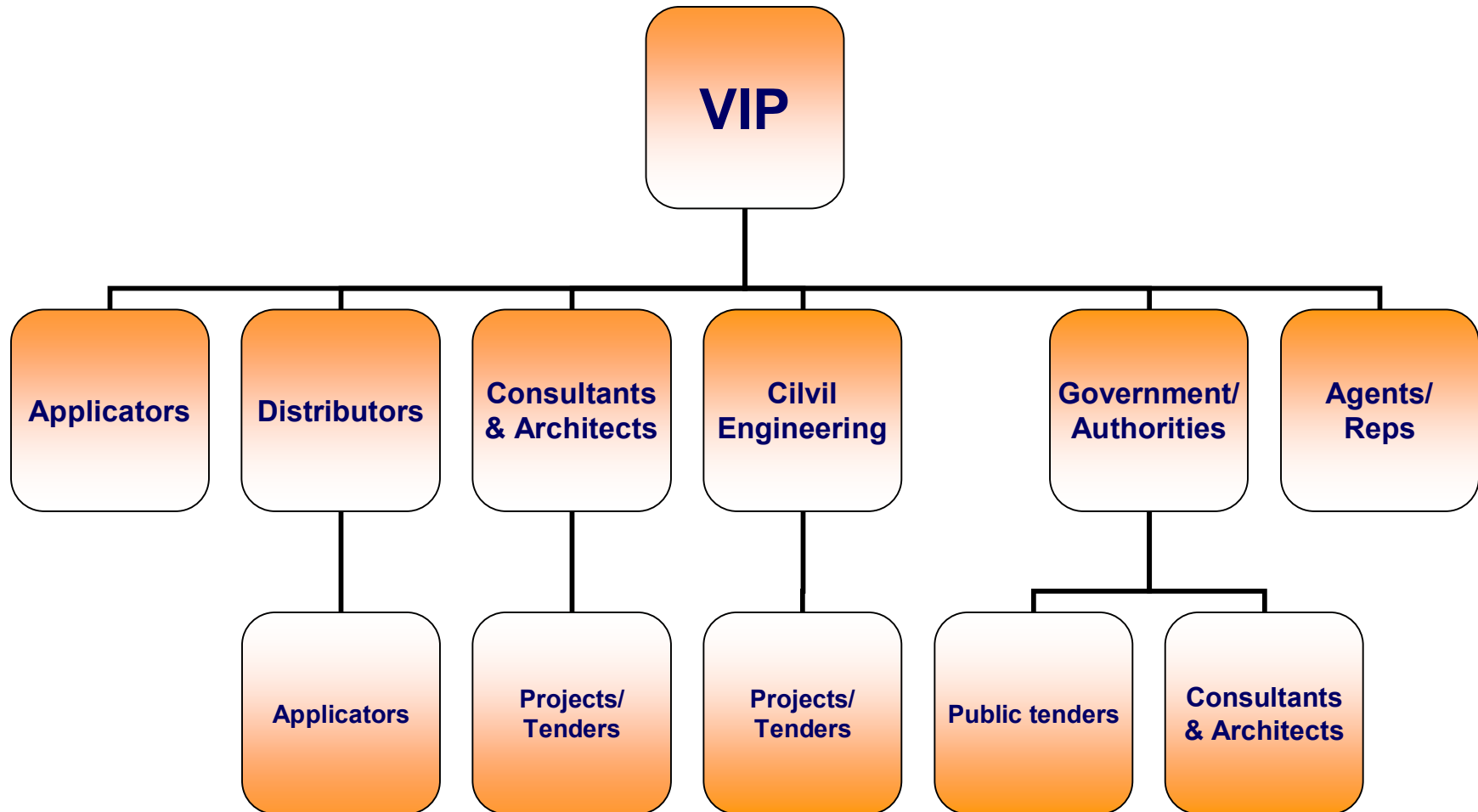
**POLYUREA**  
by  
**VIP Germany**

**The new Generation in  
Surface Coating and Joint Filling**

**...for a brilliant performance**







- **Project:** Desalination plant, State of Qatar
- **Area:** Potable water tanks, 28,800m<sup>2</sup>
- **Function:** Coating and joint sealing
- **Construction:** Mai/June 2009
- **Result:** Evaluation from client „excellent“





### Requirements:

- potable water certified
- fast curing surface coating
- no VOCs
- no cracking and stable features



### Application:

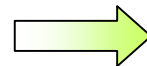
- joint filling with POLYUREA QuickFill
- primering of the joints
- flooding with salt water for testing
- concret prepare
- primering (DFT 150µm)
- aromatic coat *QuickSpray Supreme W* (DFT 2mm)
- Graco
- after 24h the tanks were filled with potable water



before



after



before



after



- **Project:** Shopping Mall, State of Dubai
- **Area:** Roofing, 98,000m<sup>2</sup>
- **Function:** Refurbishment of the leaking roof
- **Construction:** October 2009
- **Result:** Flood test successful with no water ingress after 36h



### Project description:

- issues with water ingress
- leads to damaged stock
- leads to slip hazards
- leads to structural damage

### Solution:

- tough, seamless, waterproofing layer
- 1.5mm tight weaved polypropylene geotextile
- fast curing surface coating
- QuickSpray POLYUREA Hybrid 2-part, RAL7005
- joint filling with 2-part QuickFill POLYUREA
- no cracking and stable features



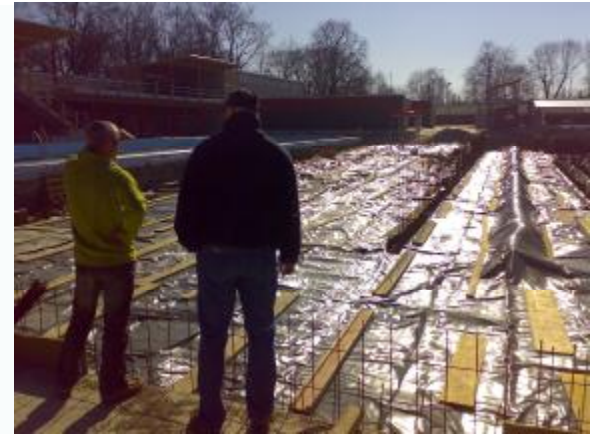


### Application:

- removal of irregularities
- existing failed membrane was well cleaned
- removal of sharp projections
- geotextile was layed out over the existing membrane
- overlap should be a minimum of 100mm, cut to detail
- application of 2-part POLYUREA Hybrid & pure POLYUREA
- primer is not required
- Graco



- **Project:** Public pool area, city of Augsburg, Germany
- **Area:** Newly constructed outdoor pool, 1,500m<sup>2</sup>
- **Function:** Waterproofing, base coat, top coat
- **Construction:** May 2008
- **Result:** Evaluation from client „excellent“





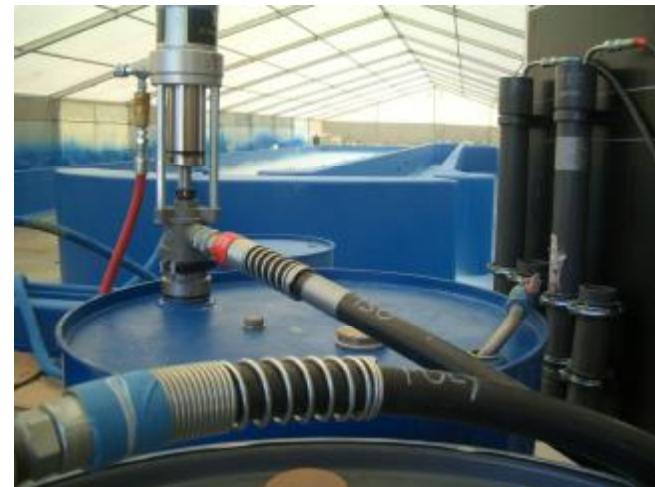
### Requirements:

- potable water certified
- fast curing surface coating
- good outdoor weahtering
- chorine-water resistance
- no cracking and stable features
- time effectiveness of application



### Application:

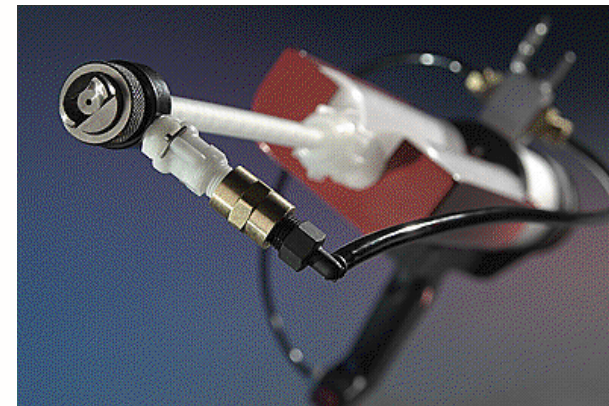
- building-up of construction tent
- concrete was prepared and cleaned
- surface was primed and sealed (DFT 0.6mm)
- water vapour proof
- base coat – *QuickSpray Supreme W* (DFT 3mm)
- within 24h the pigmented Top Coat (aliphatic) was applied
- Graco
- project was completed in less than 10 days



**NEW**

## Cold Spray – Low Pressure

- **Equipment required:**
  - Low pressure proportioning unit
  - Lower costs than high pressure units
  - Cartridge guns 125 psi / 6-8 bar air driven with no power required
- **Where to use:**
  - Small application areas (up to 20m<sup>2</sup>)
  - Repair & maintenance project
- **Key points:**
  - Lower physical properties than hot sprays



### Applications:

- Small working site areas
- Coating repair jobs
- Bedliners
- Ramps
- Platforms
- Underbody protection
- Vibration stokers
- Tanks





## *Cartridge application – cold spray*



POLYUREA Cartridge  
Video



**See you at our tabletop !**



**! New !**  
**[www.polyurea-solutions.com](http://www.polyurea-solutions.com)**



**VOELKEL INDUSTRIE PRODUKTE GMBH  
LOHENSTR. 11  
D-82166 GRÄFELFING (MUNICH) – GERMANY**

**T. +49 – (0)89- 895 5809 0  
F. +49 – (0)89- 895 5809 99**

**[www.vip-gmbh.com](http://www.vip-gmbh.com)  
[info@vip-gmbh.com](mailto:info@vip-gmbh.com)**